



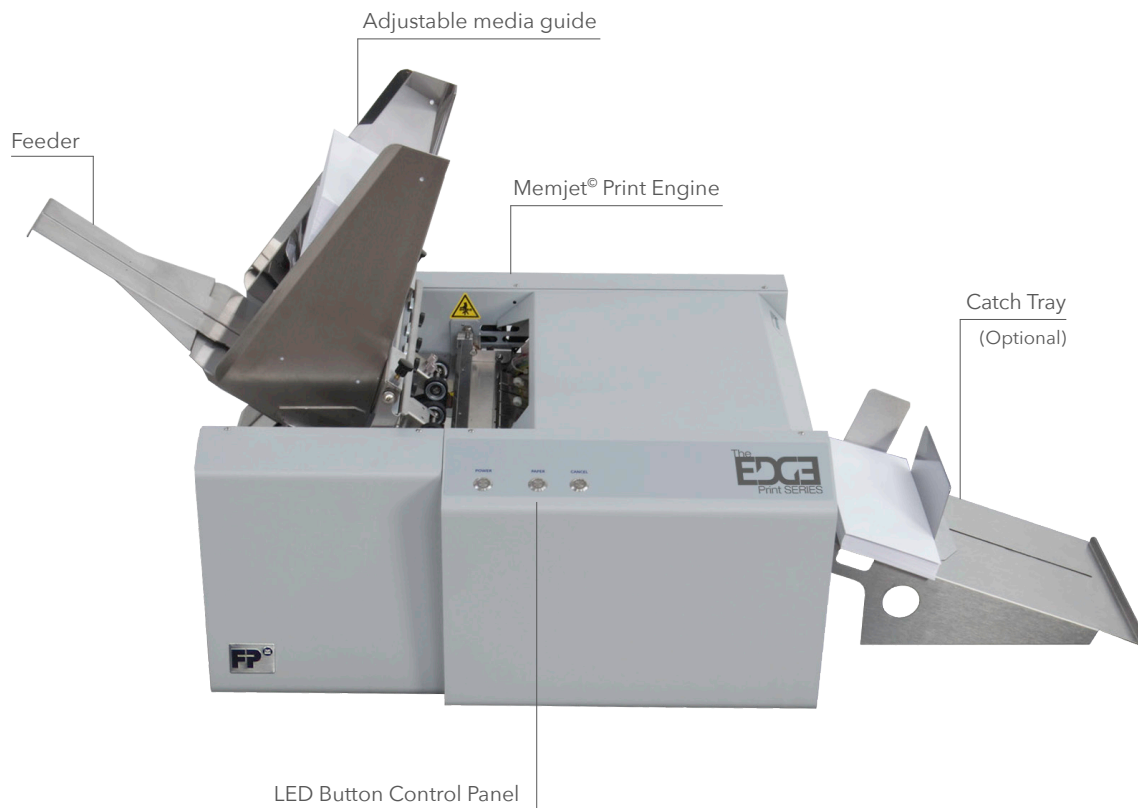
EDGE



EDGE

High Resolution Inkjet Printer

The EDGE inkjet printer uses cool print technology to offer an entirely new way to print high-quality, on-demand pieces at a lower cost than traditional print methods. The EDGE printer features a rich 16.8 million CMYK color pallet which allows you to effortlessly print marketing messages and vibrant designs that grab the attention of your recipients. Capable of printing up to 8,000 envelopes per hour and up to 3,600 letter sized sheets per hour, the EDGE can cover all of your printing needs.



Memjet® Print Technology

Take your printing off the EDGE!

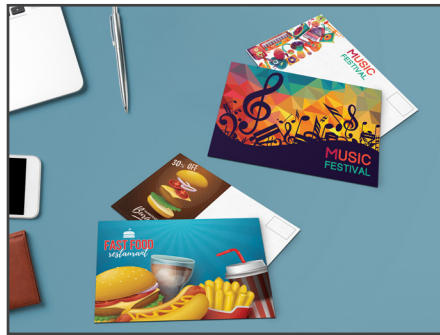
The EDGE offers a Memjet® print engine, which enables the full bleed capability so you can take your designs off the edge. With a print quality of up to 1600 dpi (dots per inch), your designs will always print sharp and vibrant. The print technology of the EDGE can handle anything you design, so your projects are only limited by your imagination.





Common applications

- Envelopes
- Postcards
- Brochures
- Trifold Brochures
- Flyers
- Posters
- Branded Documents
- Letterheads
- Letters & Invoices
- Greeting Cards
- Invitations



Optional add-ons

Conveyor and Drop Tray

The EDGE printer offers the option to add the 3' table top conveyor and high capacity drop tray for neat stacking of larger projects. No matter how big the project is, the EDGE with conveyor and drop tray can handle it with minimal employee interaction.



Saves Money

Low cost per print so you can lower your printing costs, not your printing standards



Versatile

The EDGE is able to print on a variety of media types and sizes to handle all of your projects



Vibrant Images

With up to 16.8 million colors, print vibrant designs that grab the attention of your customers



Project Flexibility

Print your media anytime you need them without having to deal with time limits or minimum orders

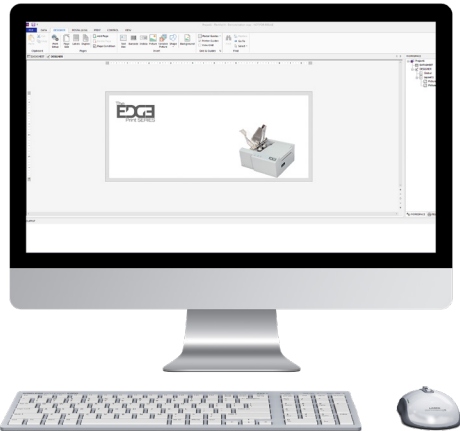


Features

- Memjet® Print Engine
- Up to 16.8 million CMYK colors
- Prints up to 8,000 envelopes per hour
- Print quality up to 1600 dpi (dots per inch)
- Full bleed printing capability
- LED button control panel
- Top load, bottom feeder
- Prints on a variety of media sizes
- Prints on glossy, matte and textured media
- Cool print technology
- 5 High capacity ink tanks
- Easy access to printhead cartridge and ink reservoirs
- USB connection to PC
- Prints variable text and images
- Automatic printhead maintenance

FlexMail Software

The design feature in FlexMail allows you to create professional looking envelopes and flyers by adding graphics and logos. By increasing the visual appeal of your envelopes, your mailings become more engaging and encourage reader interaction.



Specifications

Speed (Envelopes)	Up to 8,000 per hour
Speed (Letter sized sheets)	Up to 3,600 per hour
Print Resolution (Maximum)	1600 x 1600 dpi
Print Engine	Memjet®
Material Thickness	0.1 mm to 0.5 mm
Print Area (with full bleed)	Up to 8.5" x 17" (banners up to 30")
Color Matrix	16.8 million CMYK colors
Duty Cycle (per month)	350,000 letter sized sheets
Dimensions (W x L x H)	20" x 24" x 17.25"
Weight	75 lbs.
Material Size (Hopper)	3" x 4.2" (min), 9.5" x 17" (max), manually load banners up to 30"

Options

- Catch Tray
- 3' Table Top Conveyor
- High Capacity Drop Tray
- Unwinder Kit
- Winder Kit
- FlexMail Software

Learn more at: www.fp-usa.com/edge

© 2021 FP Mailing Solutions. All Rights Reserved. TM, SM and ® denote trademarks or registered trademarks of Francotyp-Postalia, Inc. The FP™ logo and FP™ Mailing Solutions Product logos are trademarks or registered trademarks of Francotyp-Postalia, Inc.